

Parallel Universes

Curated By: Angelique Green

This exhibit encourages its viewers to interpret works through an interactive virtual design. The hope of this virtual exhibition is to create an experience of wonderment for those who view it. Although the works and context may vary greatly, these artists have come together at this time to form one body of work. The exhibition title refers to this togetherness while also alluding to the vast differences of each artist, of their works, and the contextual meanings behind them. While peering into the *Parallel Universes* here, perhaps the viewer will experience a reflection of themselves or the emotions being experienced during this time.



Laura Holzinger

Upon exiting the corporate world and beginning her second act as an artist, Laura Holzinger re-discovered a deep passion for creating. Inspired by a plethora of subjects, she plans on being a life long learner in order to add to her artistic arsenal. The creativity she possesses was cultivated and encouraged from an early age by her loving and creative parents.

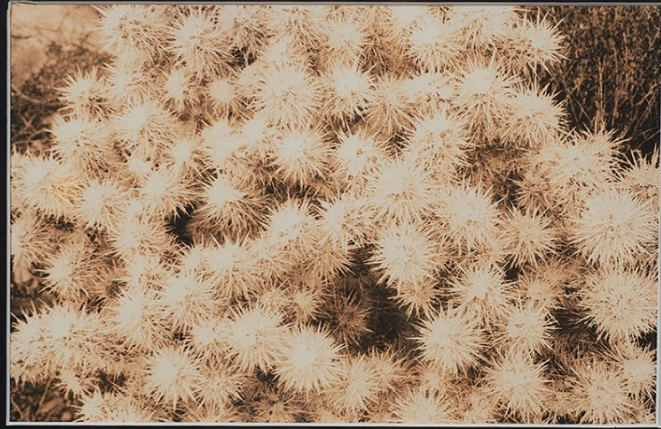
She works with many different media from metal sculpting to crafted paper clothing. Laura's paintings are produced utilizing immense attention to detail, drawing the viewer in and representing the varied subjects in a very realistic manner. While she often incorporates an element of whimsy within her works, Holzinger also strives to provoke thought through her social art.

above: *Cowboys and Indians.* below: *Pots and Pans.*



Benjamin Poarch

Passionate about utilizing alternate processing methods to create representational photography, Poarch is able to successfully translate a variety of subjects. The recent series taken just before the national parks closures seeks to mirror the uncertainty of the pandemic with the uncertainty of trying a new process on the last of discontinued photo paper. The chosen title translates the similarity of this photo processing to the spreading of COVID-19. Each scene depicts the grandeur of nature and its indifference to the human existence while also creating the calming stillness usually only experienced in nature.



above: *Crown of Thorns*. below: *Stay Put*. Part of the series, *Infectious Development*.





Karma Reclusado

above: *Tree*. below: *Nights of Abstract Adjustments*.

Taking much of her inspiration from vintage films and graphic novels, Karma uses humor to create unique characters. Working with a variety of media her dreamy retro influences can be clearly observed. Karma does not limit her art to the constraints of this world, she builds a brand new existence instead.



Karma Reclusado

Stephanie Alacon

Duality and symbolism translate easily through Stephanie's glass and ceramic works. She is successfully able to communicate her observations of the female socioeconomic context as well as the stigmas relating to mental illness through abstract shapes, designs and fractal light utilization. She

harnesses intriguing contrasts within her work that are capable of drawing on curiosity, and sustaining interest through their pure beauty. These pieces are best viewed from multiple angles to experience a variety of cast off light. These effects can be experienced by clicking these interactive photos of Alacon's art.

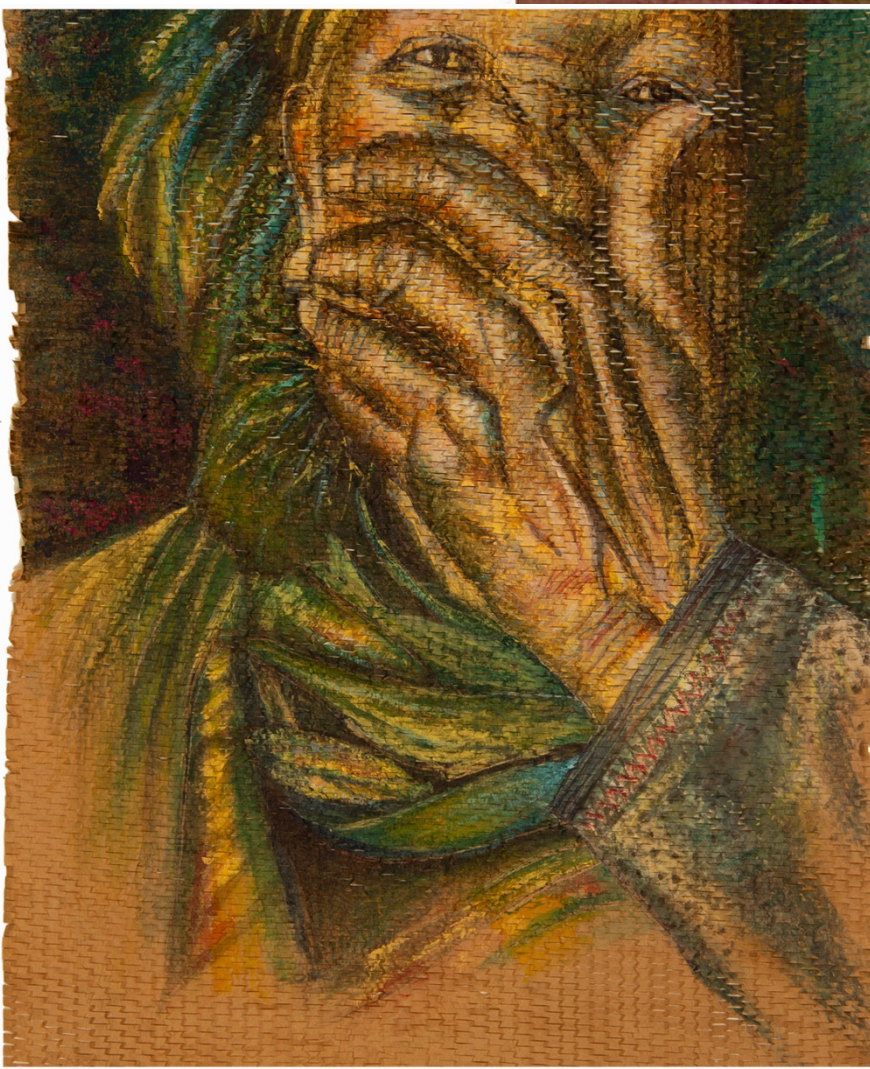
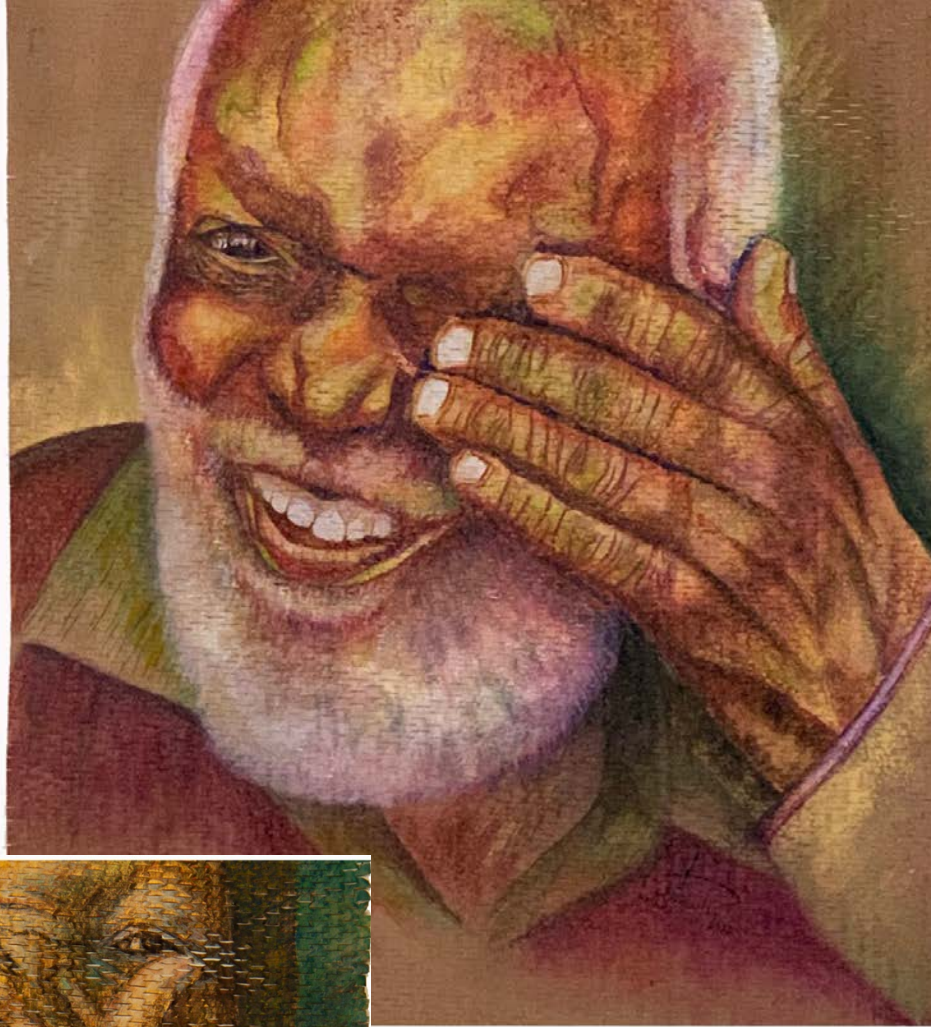


above: *Take a Bite.* below: *Release.*



Neda Towfiq

Inspired by an extremely creative upbringing in Iran, Neda recognized early on the calling to art. Finding texture very intriguing, she has honed her painting skills on a variety of paper types including her signature process involving watercolor on delicate packing paper. These vibrantly colored images represent those who have made an impact on Towfiq, and translate their stories of life, love, pain, and the interdependence of humanity. A viewing of these works initiate a mirror of



above: *Tears of Joy*. left: *The Immigrant*

one's emotions, allowing for a plethora of interpretations of the detailed facial expressions. There is an amazing contrast between the delicacy of the paper and the details within the image. The paper's texture adds to the mystique and allure of Neda's paintings. Transparency of the paper is an integral part of the works, adding to the depth and communicating a clear feeling of fragility. Towfiq creates while experiencing a meditative trance when creating her works of art, emulating externally the joy and purpose of life.

Maggie Skidmore

Yearning to tell a story through her relatable and authentic works that contain a disquieting undercurrent, Maggie is committed to developing an artistic approach in a variety of media. Her art is an imaginative discovery of the structure and boundaries of her projects. Skidmore utilizes structured, varied processes and problem solving to jettison herself to new levels of creation. The 3D artworks presented here are best experienced from every angle. This can be accomplished here by clicking the interactive photos on this page. Maggie's pieces of art induce



above: *Tandava*. right: *Tree Bones*

an otherworldly feeling that is limited only by the imagination of the viewer. There is a curiosity inducing quality that is capable of drawing one in and mesmerizing them. Skidmore is able to utilize contrasting textures, colors, and shapes to create her unique and intriguing pieces. She opens her audience up to new possibilities, presenting them with a positive response, and inspiring them to pause, to embrace a newly found alertness in life.

