

Hancy Haber

Prof. Leah Cluff, PhD.

Art 270 Spring 2020

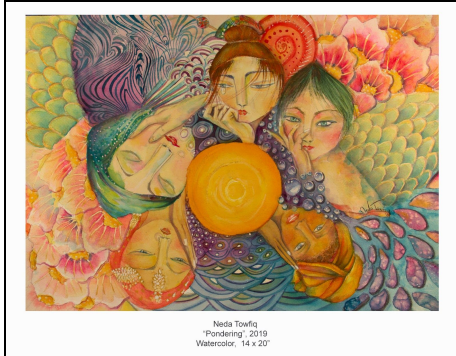
April 29, 2020

Week# 13: Short Catalog Essay “*Humans Connections*”

As the title of my Virtual Exhibition, “*Human Connections*”, I meticulously chose the connections of each painting into one narrative theme that will give me full support for my virtual exhibition. I will accurately arrange in order and the right distance of each painting into another by using and coordinating scale based on the plan dimension. I don't want to look like a Salon show, or too many open spaces to avoid boredom from the spectators. I want to make this exhibition realistic through using scale even if it is arranged in the actual location in the *Kruglak Gallery*. I'm so confident that I'll use the main entrance in front of the bookstore, and the opposite door is the exit, in order to have a good traffic flow, which is important. The theme and the participating artists' names from Art 295 are both on the right side wall after the entrance. The sitting of each painting and sculpture with a spotlight to make it more visible and catchy. Aside from the technical aspect, the *theme* or the *narrative* is also important on how you relate to the audience and carry their emotions through your theme composition.

“**Human Connections**”, humans tend to connect to what's around them, turning it into inspirations to create all forms of art known to man. With a variety of disciplines, from realism to abstract, endless possibilities of human expressions that shaped cultures and civilizations from the past, present and future. The desire to make connections, near and beyond our reach shall never be quenched, and this is what

makes us uniquely human. (*The fluidity of the art rendering of Towfiq created connection to the viewers*).



Title: Pondering

Neda Towfiq is an Iranian American visual artist working between experiment media and watercolor. She has lived and studied in 3 continents, has travelled extensively to different parts of the world, and currently resides in Southern California.

Humans are highly creative thinkers, giving meaning and interpretation to the unknown and have the means to label everything to give a sense of control and understanding, the **“Pondering”**, by Neda Towfiq meaning of life, reflecting and meditating towards that idea, which created philosophies and different beliefs that offered answers. Sometimes with too many connections we create exploration and become our enemy in the future.

Numerous of artwork of **Neda Towfiq** I chose such as “The Immigrant”, 2020, in Watercolor, 24” x 20”, “Praise”, 2020, Watercolor, 26’ x 20”, “Tears Of Joy”, 2020, Watercolor, 22” x 20”, and more. The “Tree” and “Baguette”, by **Karma Reclusado**. The “Bird On Cape”, “Pots and Pans”, “ Sisters”, “Cowboys and Indians”, and “Ma’am’s me”, by **Laura Holzinger**. The “Waiting”, and “Pumpkin”, by **Maggie Skidmore**. The “Release 3”, “ Bottle Nick”, “Cry Baby”, “Take A Bite”, and “ Just A Through”, by **Stephanie Alarcon**. The “ Cloud of Thorns”, 2020, Silver Gelatin, 8” x 10”, “Stay Put”, 2020, Silver Gelatin, 8”x 10”, “Fibrous”, 2020, Silver Gelatin 8” x 10”. By **Benjamin**

Poarch. Maybe I will add more artwork; it depends on the developments of my theme that are almost done.

The sculptures made by Stephanie are also interesting for every detail she did. It has a connection in where I'm looking for. Like the **"Take A Bite"**, it reminds me Adam and Eve from the Bible that through this fruit the Man and Woman get a connection to each other.

Sculpture By: **Stephanie Alarkon**, no available dimension, Title: **"Take A Bite"**.



The creations of God are truly amazing; it all started in the Garden of Eden. The "Take A Bite" title is so universal. Especially the connections of Earth to the Universe, Nature to Humanity and being human. The words offering to someone is a sign of sharing and helping of what we have. **"Take A Bite"**, is an Organic Title.

Painting by: **Karma Reclusado**, no available dimension, Title: **"Tree"**

Karma Reclusado is a resident of Vista, California and has appreciated art for 15 years. She loves



tackling prompts in studio art practice projects.

Karma's favorite pieces are traditional or digital semi-realistic images of people.

And the human connection to nature such as trees, plants, and animals were truly the basic needs before shelter. The wood for fire before anything else, being human everything under the sun, human intelligence can work on any subject for living. Like the tree of life that blooms and bare fruits for food, used as shades, a barometer in where the wind comes from.

And the great Poem of **Joyce Kilmer**, the **"Tree"**, **...Poems are made by fools like me, but only God can make a tree.**

Different artists with various approaches in art technique, and goals that make it challenging to create your own story. Their each rendition of brush strokes, the capturing of photographs, the shape of sculptures and their ideas that make them stunning and memorable. It's my first time to experience a unique virtual exhibitions and composition of titles and themes of different artists. And I'm so glad to have this kind of Art Class.