

Solitude

A Virtual Exhibition curated by Andy Portillo

Solitude

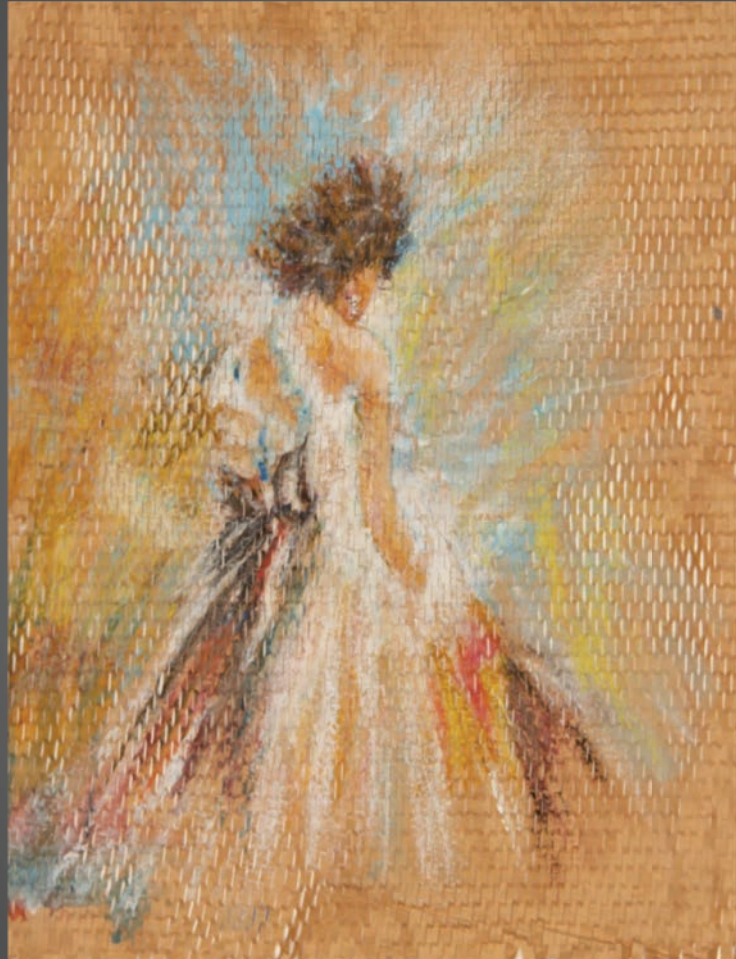
The notion of being alone is quite uncomfortable for many people. There arises a multitude of contemplations that hinder the ability to be content with the present. *Solitude* recognizes these anxious perceptions; however, the story does not end with considerations that weigh heavy on hearts and minds. This virtual exhibition sheds lights on the possibility of arriving to a light-hearted resolve that ends with finding beauty in oneself.



Benjamin Poarch
Rock and Hard Place
2020
8x10"



Benjamin Poarch
Party of One
2020
8x10"



Neda Towfiq
Wedding
2019
18x14"



Laura Holzinger
Pots and Pans
2016
20x16"



Stephanie Alacon
Cry Baby
2018



Karma Reclusado

Karma Reclusado
Nights of Abstract Adjustments
2020
8.5x11"



Laura Holzinger
Movement
2019
40x24x6"



Maggie Skidmore
Sacrificial Swan
2019
9x27x19"



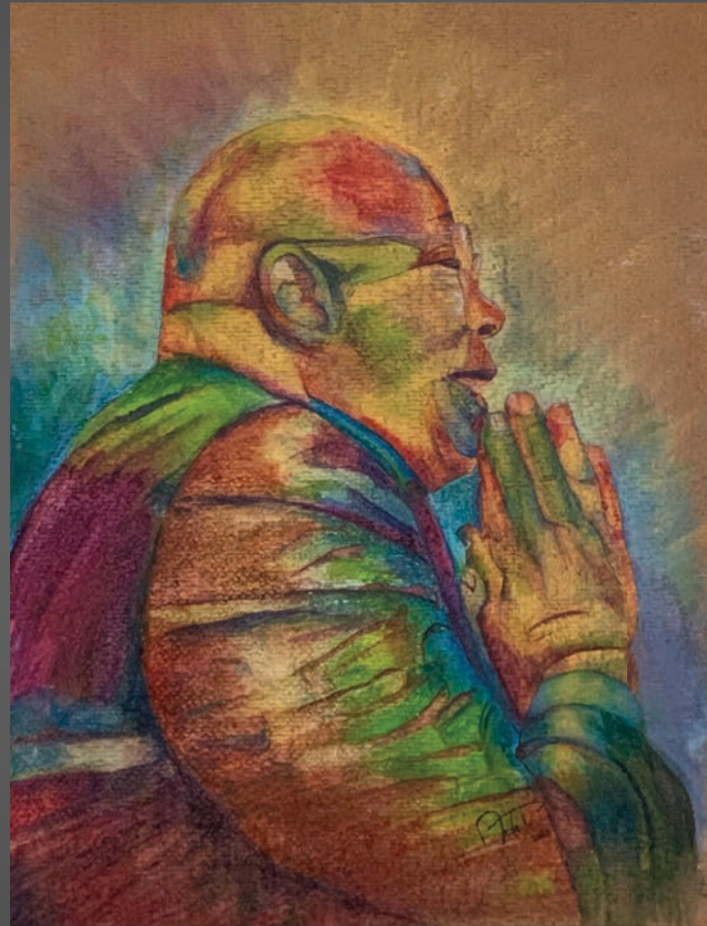




Maggie Skidmore
Leda and the Swan
2019
19x19"



Karma Reclusado
Emerald Dame
2020
7.6 x 9.5"



Neda Towfiq
Praise
2020
26x20"



Stephanie Alacon
Release
2018

Bowl: 6x6x3"

Orbs: 3x3x2.5"

Smaller Bowl: 3.5x3.5x2.5"







MiraCosta College Kruglak Gallery

